

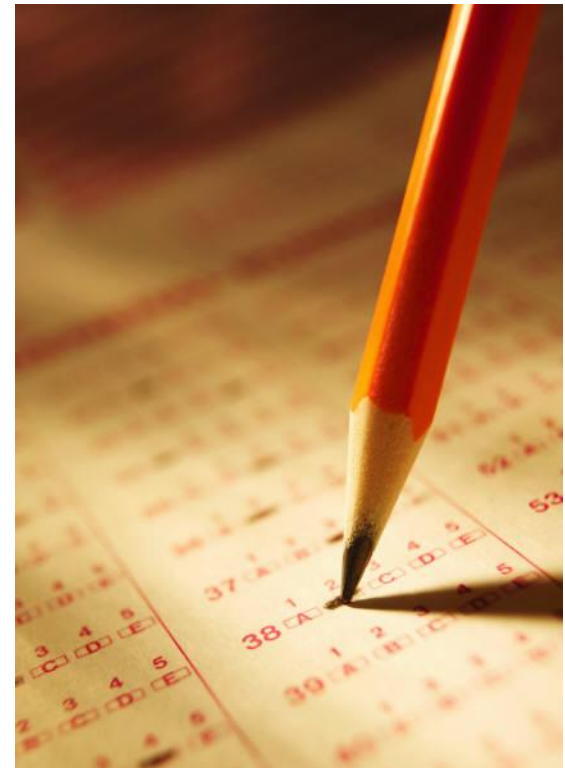


Franklin High School Data Overview: Mathematics

Instructional Leadership Team
September 2007 Meeting

Purpose of today's meeting

To start a conversation about math performance at Franklin by looking at how our 10th graders performed on the state test last spring



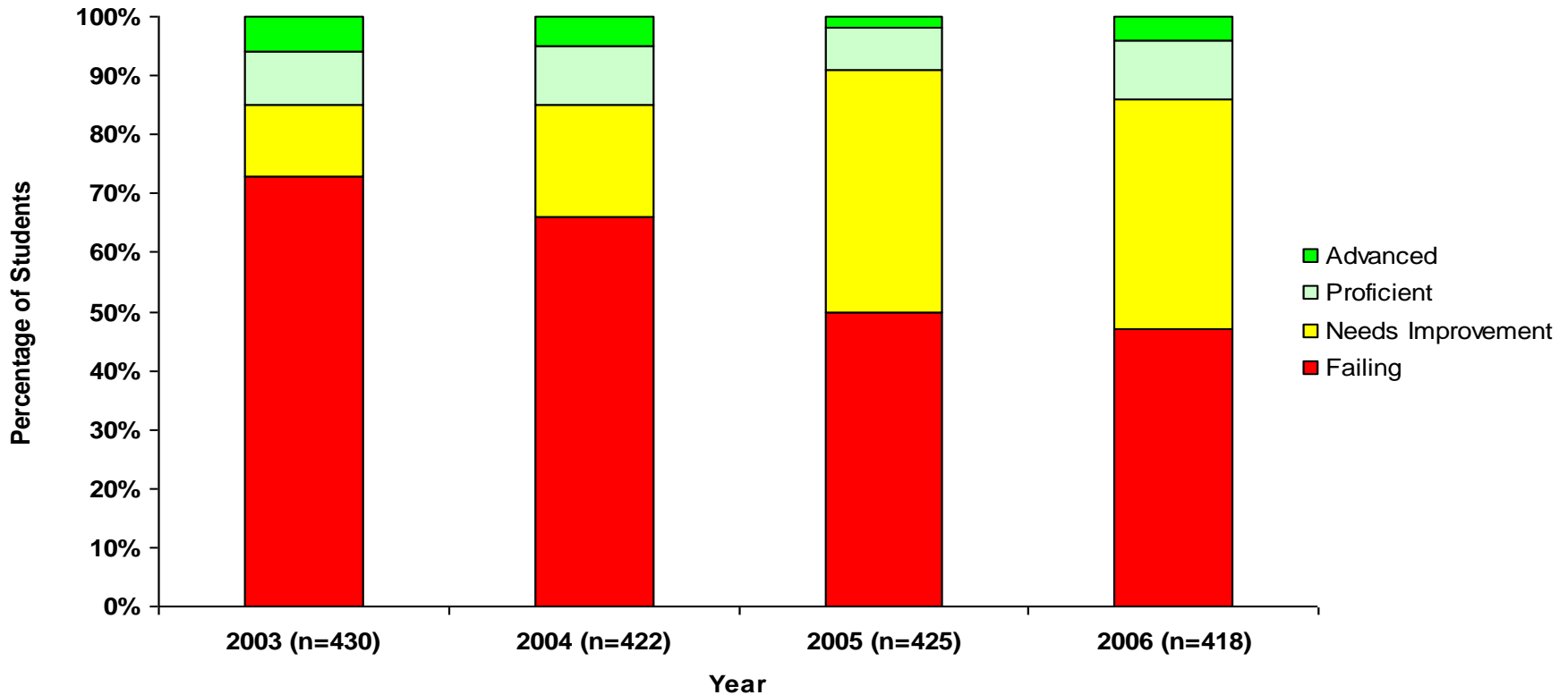


Agenda

- 3:00-3:25 Overview of presentation/discussion
- 3:25-3:45 Breakout to brainstorm questions
- 3:45-4:00 Reconvene to discuss next steps

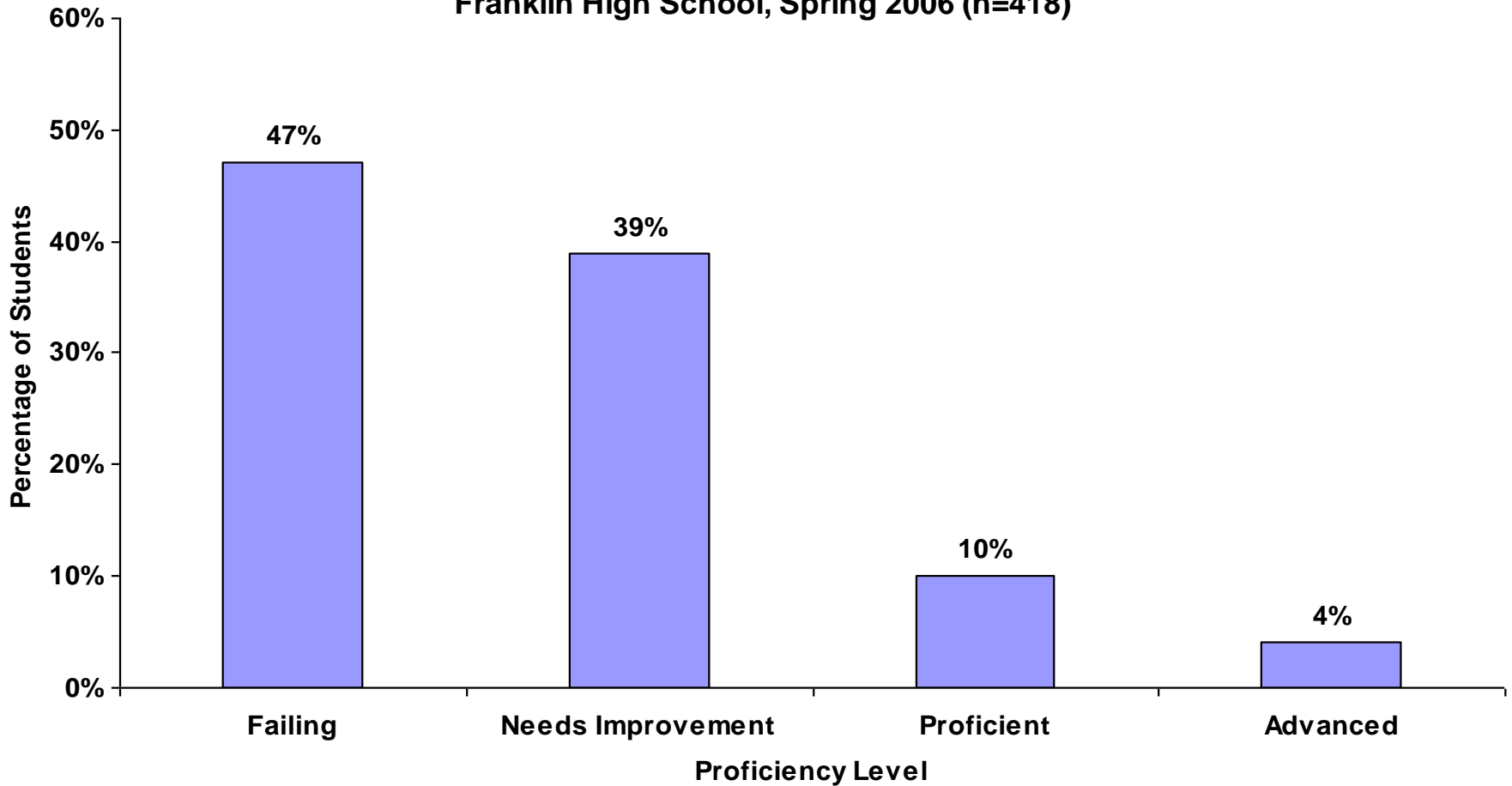
How has performance changed over time?

STUDENT PERFORMANCE -- MATHEMATICS
Grade 10 State Comprehensive Assessment
Franklin High School, 2003-2006



How did 10th graders perform in 2006?

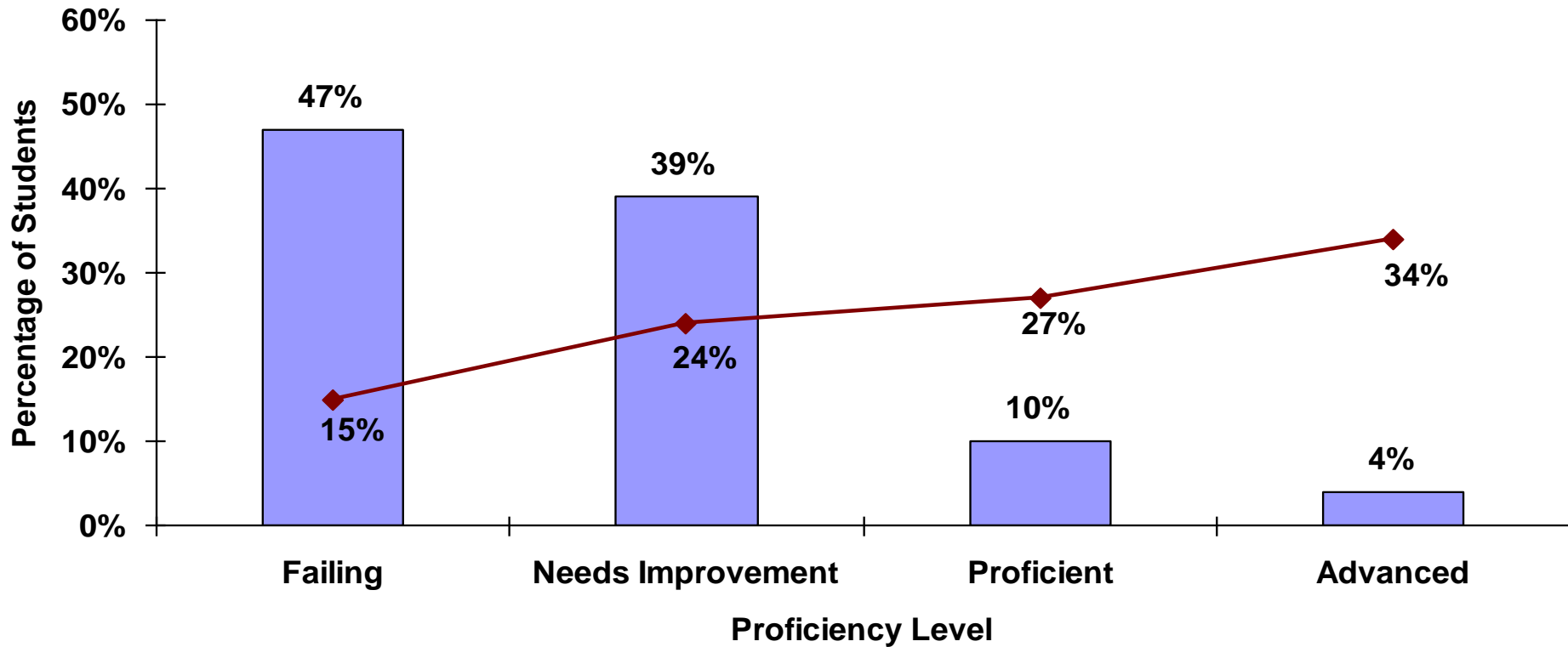
**DISTRIBUTION OF STUDENT
PROFICIENCY-- MATHEMATICS**
Grade 10 State Comprehensive Assessment
Franklin High School, Spring 2006 (n=418)



Compared to state?

DISTRIBUTION OF SCHOOL AND STATE STUDENT PROFICIENCY-- MATHEMATICS

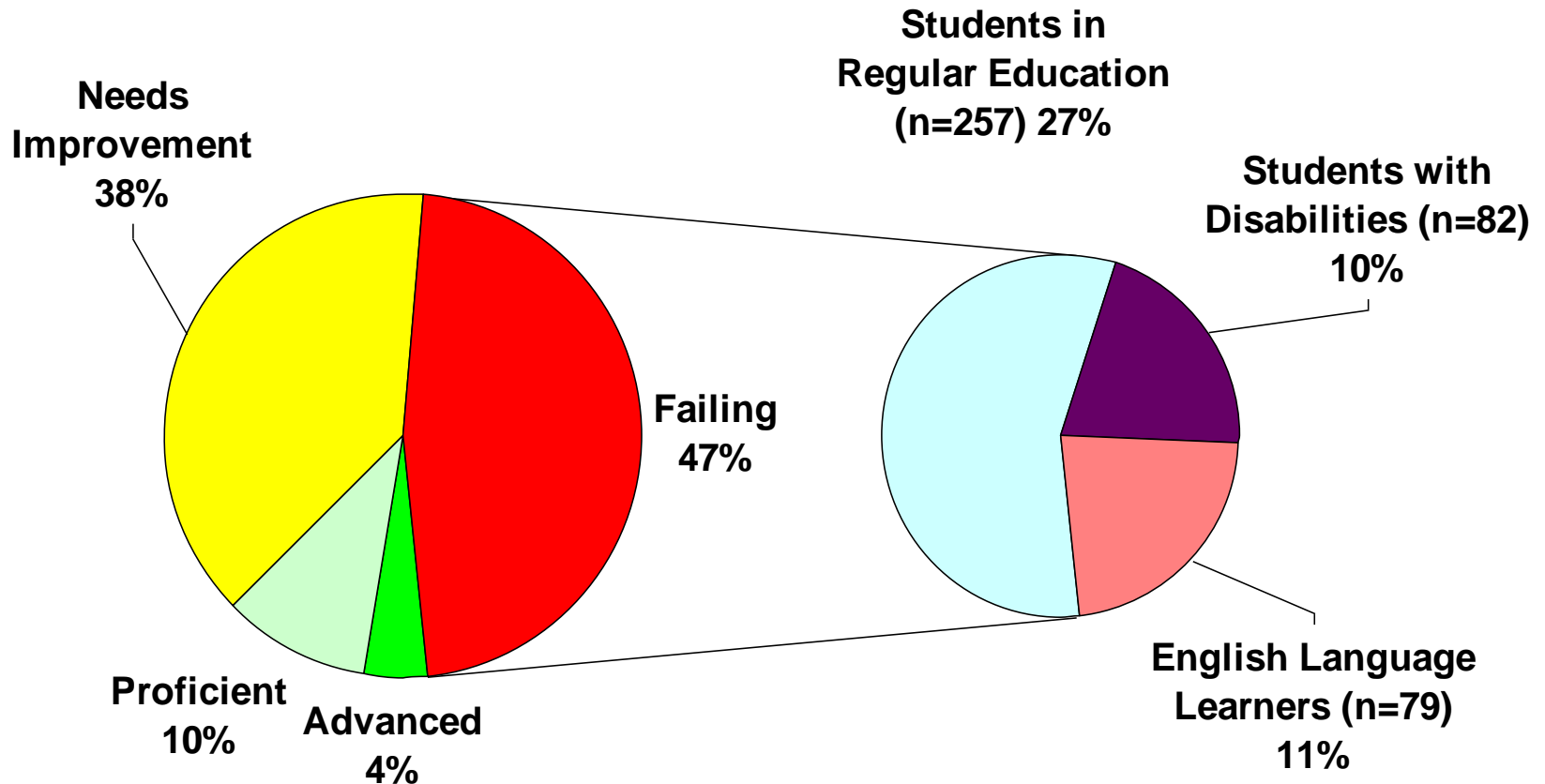
Grade 10 State Comprehensive Assessment
Franklin High School, Spring 2006 (n=418)



Legend: School (blue bar), State (red line with diamond)

Which students are failing? By program...

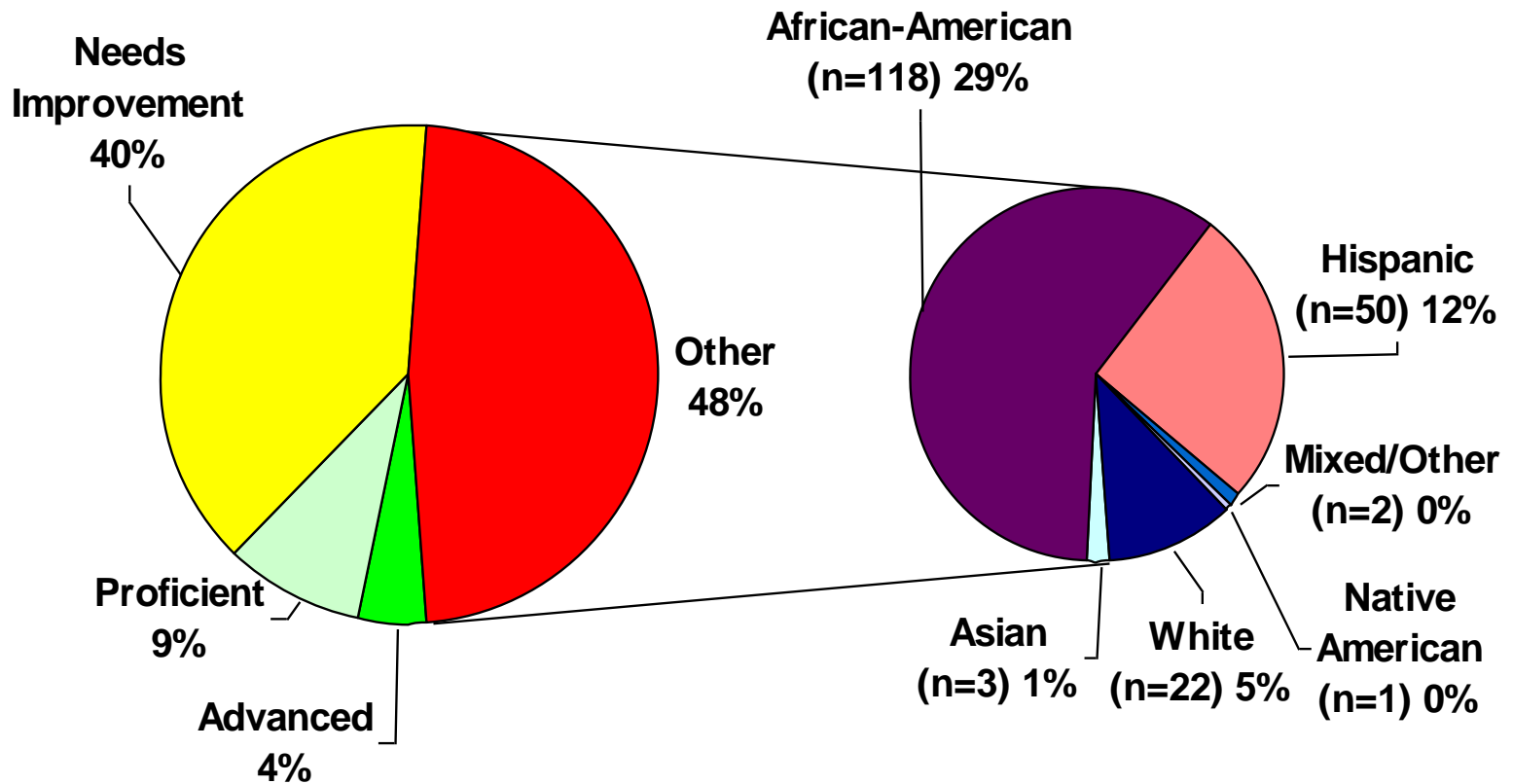
Number of Students in Each Proficiency Group
with Failing Students by Instructional Program
Grade 10 State Comprehensive Assessment
Franklin High School, Spring 2006 (n=418)



Which students are failing? By race/ethnicity...

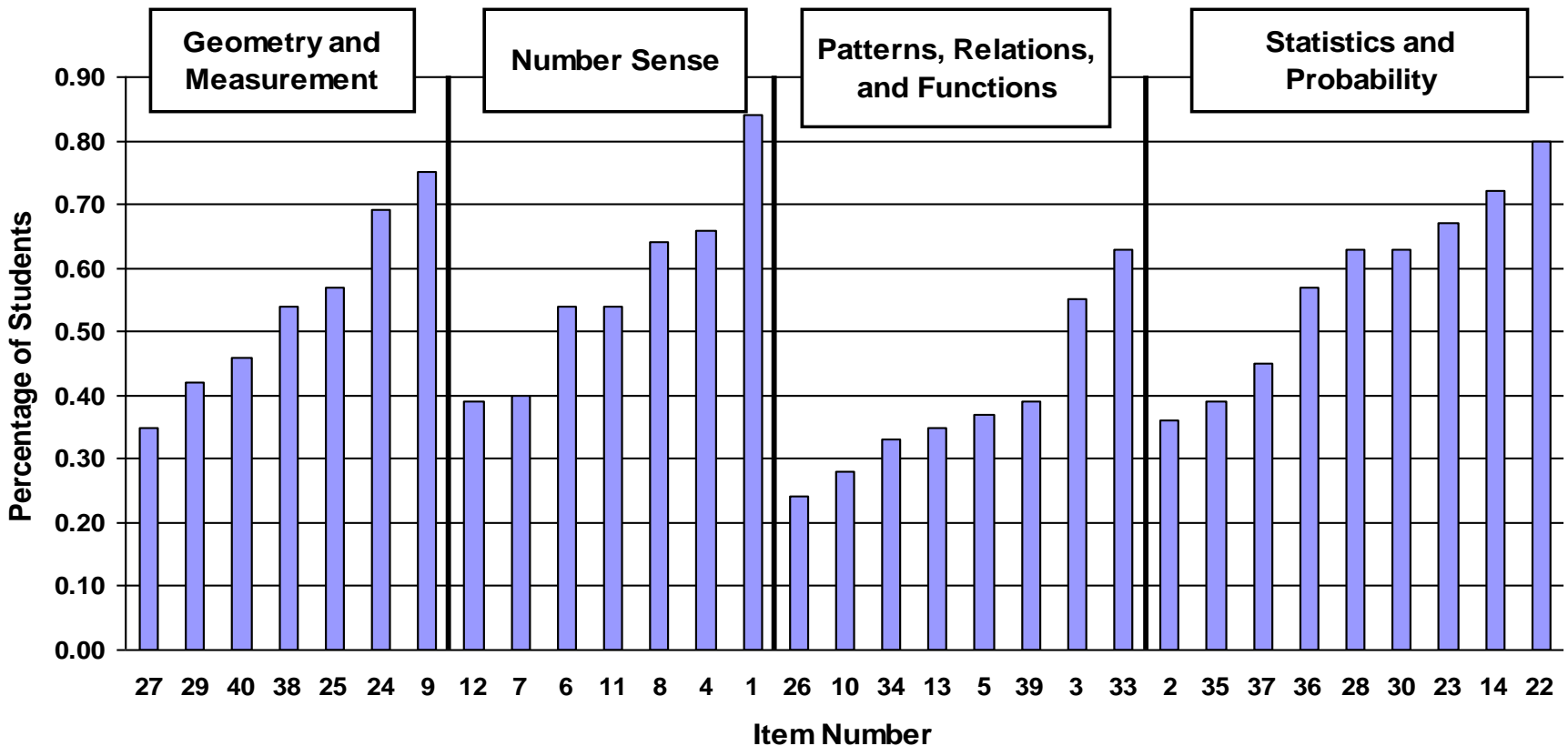
Breakdown of Failing Students, Race/Ethnicity

Grade 10 State Comprehensive Assessment
Franklin High School, Spring 2006 (n=418)



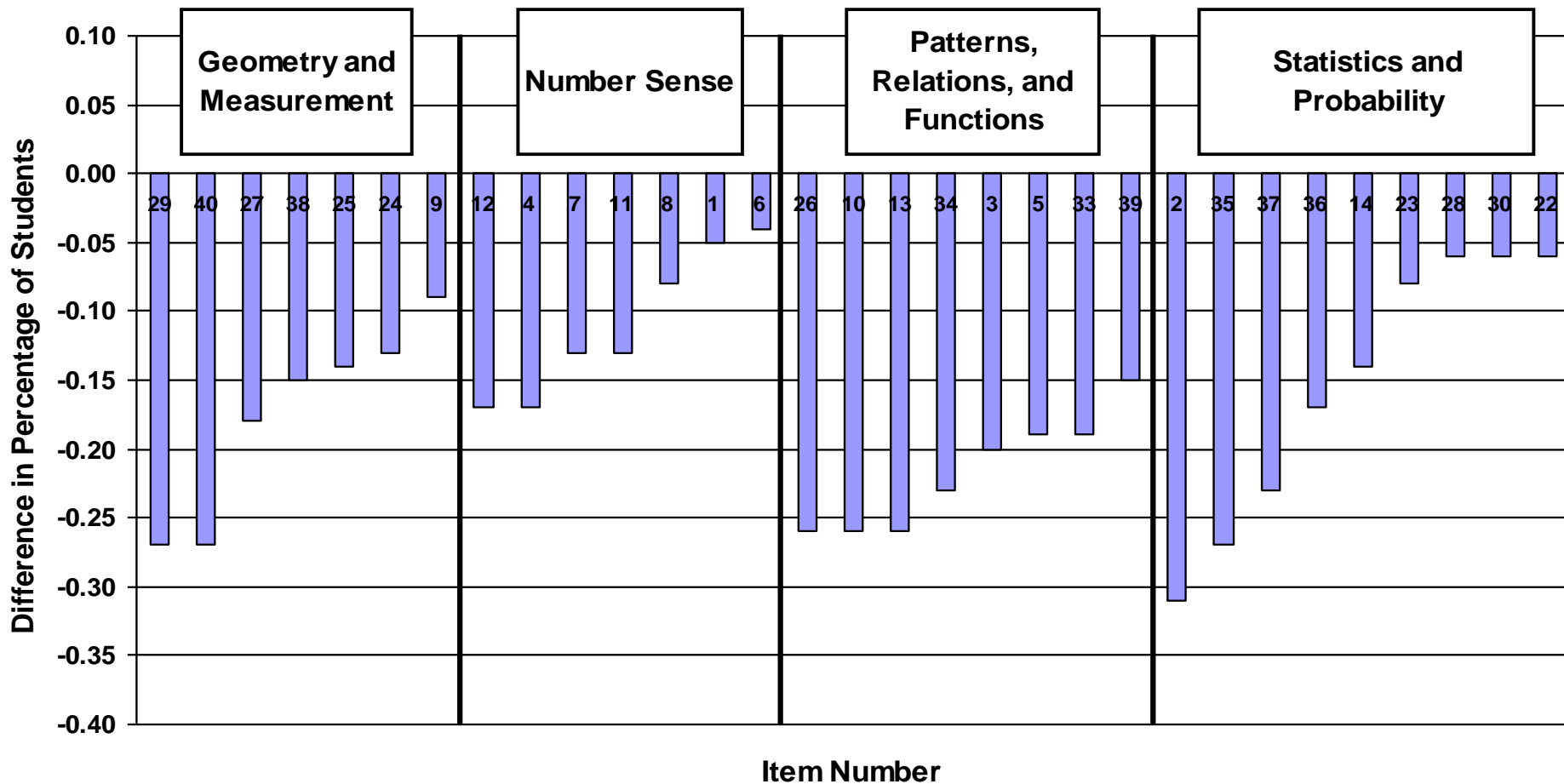
How does performance differ by strand?

PERCENTAGE OF STUDENTS ANSWERING EACH MULTIPLE-CHOICE ITEM CORRECTLY
 Grade 10 State Comprehensive Assessment - Mathematics
 Franklin High School, Spring 2006 (n=418)



Compared to state?

PERCENTAGE OF STUDENTS ANSWERING EACH MULTIPLE-CHOICE ITEM CORRECTLY
 Grade 10 State Comprehensive Assessment - Mathematics
 Franklin High School, Spring 2006 (n=418)



What questions does this overview raise? *Brainstorm in groups:*

Group 1	Group 2	Group 3	Group 4
Roger	Mallory	Sasha	Adelina
Eddie	Will	Karyn	Dottie
LaShawn	Miguel	David K.	Ervin
David S.	Sondra	Jamal	

What should we do next and who should do it?

